

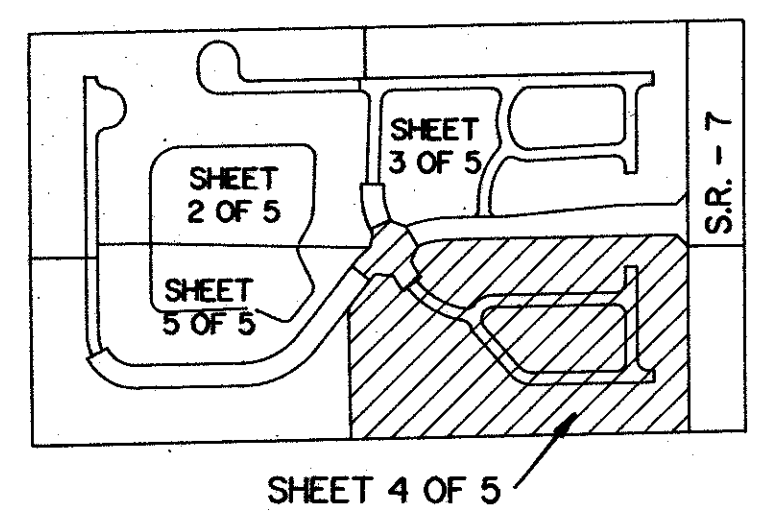
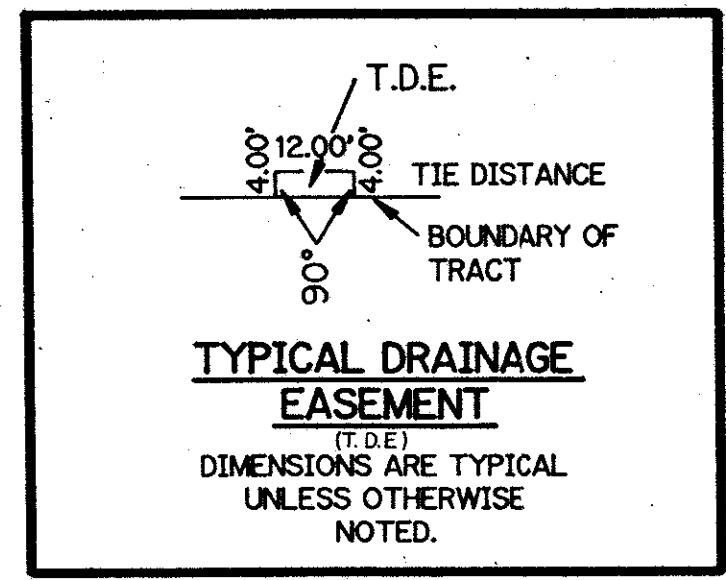
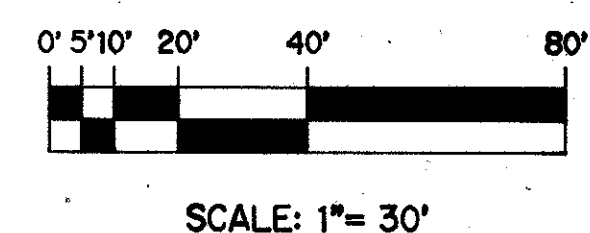
(A P.U.D.)

ALLEGRO REPLAT

BEING A REPLAT OF THE PLAT OF ALLEGRO AS RECORDED IN PLAT BOOK 60, PAGES 3 THROUGH 7 INCLUSIVE, OF THE PUBLIC RECORDS OF PALM BEACH COUNTY, FLORIDA. SECTION 25, TOWNSHIP 47 SOUTH, RANGE 41 EAST. PALM BEACH COUNTY, FLORIDA

SHEET 4 OF 5

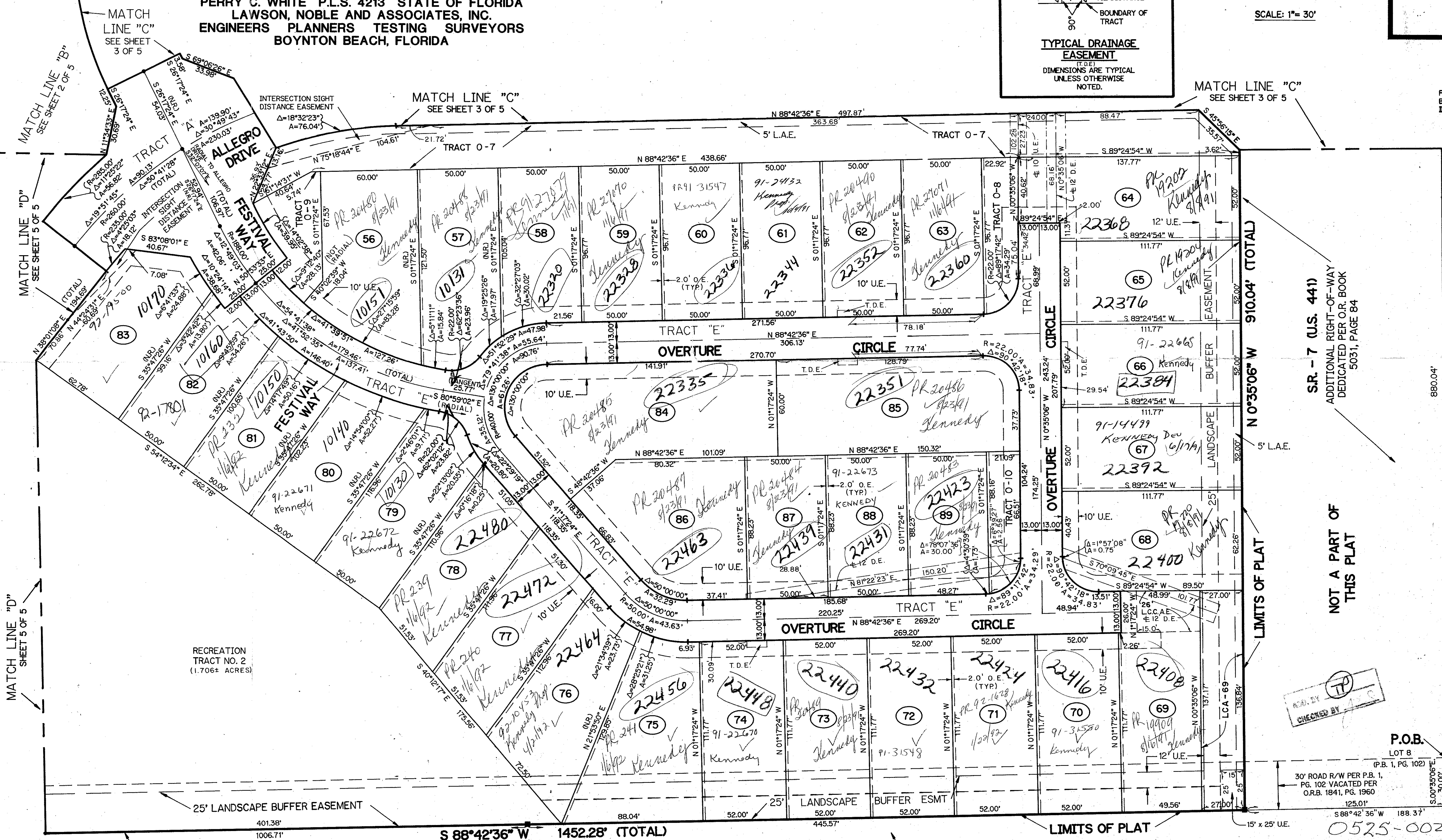
FEBRUARY, 1989



KEY MAP
N.T.S.

THIS INSTRUMENT PREPARED BY
PERRY C. WHITE P.L.S. 4213 STATE OF FLORIDA
LAWSON, NOBLE AND ASSOCIATES, INC.
ENGINEERS PLANNERS TESTING SURVEYORS
BOYNTON BEACH, FLORIDA

SUBDIVISION - Allegro Replat
BOOK 63 PAGE 195
FLOOD ZONE AD1 FLOOD MAP # 100A
QUAD # 69 ZONING R.S. 85-170
#7AZ 181 ZIP CODE 33433
PUB NAME Allegro Replat Plat



MATCH LINE "D"
SEE SHEET 5 OF 5

MATCH LINE "D"
SEE SHEET 5 OF 5

MATCH LINE "B"
SEE SHEET 2 OF 5

MATCH LINE "C"
SEE SHEET 3 OF 5

MATCH LINE "C"
SEE SHEET 3 OF 5

MATCH LINE "C"
SEE SHEET 3 OF 5

LIMITS OF PLAT

SR - 7 (U.S. 441)
ADDITIONAL RIGHT-OF-WAY
DEDICATED PER O.R. BOOK
5031, PAGE 84

NOT A PART OF
THIS PLAT

SR - 7 (U.S. 441)

WEST LINE OF SECTION 30-47-42

RECREATION
TRACT NO. 2
(1.706± ACRES)

CHANGED BY
[Signature]

P.O.B.
LOT 8
(P.B. 1, PG. 102)

30' ROAD R/W PER P.B. 1,
PG. 102 VACATED PER
O.R.B. 1841, PG. 1960

LOT 49 OF FLORIDA FRUIT
LANDS SUBDIVISION NO. 2
P.B. 1, PG. 102

LOT 49 OF FLORIDA FRUIT
LANDS SUBDIVISION NO. 2
P.B. 1, PG. 102